

# Ickworth Park Primary School – SEND News

## Welcome to our first SEND newsletter!

Every month, our newsletter will provide information and support about SEND at Ickworth Park Primary School.

We will also keep you updated with the Suffolk Local Offer and how to access support in the community.

As Ickworth Park's Special Educational Needs and Disability Coordinator (SENDCo), I am here to offer support and advice regarding additional needs for your child. As a school, we value the engagement of our parents so please do not hesitate to get in touch if you have any questions. My email address is:  
**[senco@ickworthpark.co.uk](mailto:senco@ickworthpark.co.uk)**

Mrs. Reynolds



## Support in the Community

SENDIASS hold frequent, **free** parent and carer sessions aimed at providing information and understanding of SEND in a relaxed and informal environment. Access their events calendar [here](#).

The Psychology in Schools team run regular **free** workshops to provide up-to-date guidance and advice on how families can support young people with SEND.

Many of their workshops have been recorded and can be found [here](#).



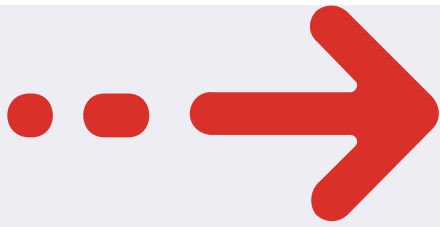
## Suffolk Local Offer

For further information about Suffolk's Local Offer, please visit:  
[www.suffolklocaloffer.org.uk](http://www.suffolklocaloffer.org.uk)

You can sign up to Suffolk's SEND News and Updates newsletter by clicking [here](#).

**The Source** website has been created to provide information and advice for young people with SEND in Suffolk. Explore the website by clicking [here](#).

The Local Offer Helpline is a phone number for families with queries about SEND. Contact them on:  
**0345 606 1490** (Mon-Fri, 9am-5pm)



## Transition to a new class...

All the teachers and teaching assistants at Ickworth Park are working closely to prepare for the transition between year groups. Meetings are currently being held to discuss pupils' specific needs and to share any important information in advance of the new academic year.

For pupils with SEND, Learning Plans are shared with the new teachers so their bespoke provision and targets can be in place for September. For some children with SEND, additional transition sessions or meetings with their new teacher may be arranged.

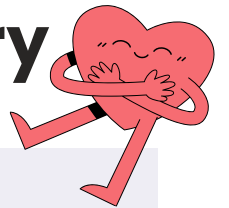
Social stories and visual planners may also be used to support children in preparation to moving to a new class.

A whole school transition day is planned for **Tuesday 16th July**.

In the first half of the **autumn term**, class teachers will be in touch to arrange a meeting to discuss Learning Plans and share new targets.

In the meantime, if you have any concerns or changes to share, please do get in touch with your child's class teacher.

## Top tips for transition to secondary school



- Recognise signs of anxiety and be available to listen to worries.
- Encourage independence. Encourage your child to pack their bag, prepare their own lunch and set an alarm to wake up in the morning.
- Chat about how secondary school will be different from primary school - bigger site, new people, changing teachers, new subjects. Talk about how these changes might make your child feel.
- Communicate key information with the new school. Contact the SENDCo and check they have all the information to build a picture of your child's needs and how they learn best.
- Prepare in advance! Get uniform and stationery ready. Plot and practise the route to school.

For additional advice on how to support your child's transition to secondary school, visit [Young Minds](#)

[Click here](#) to read Ickworth Park's SEND Information Report

Look out for the date of our next SEND Coffee Morning. We will be discussing **mental health** and **wellbeing**, and launching our new 'Ickworth Park Universal Offer'

